

Plan view of bridge deck showing dimensions and construction details. The total length is 104'-0". Key features include:

- Dimensions:**
 - Span 1: 32'-0" (from Brg. Abut #1 to Brg. Pier #1)
 - Span 2: 40'-0" (from Brg. Pier #1 to Brg. Pier #2)
 - Span 3: 32'-0" (from Brg. Pier #2 to Brg. Abut #2)
 - End offsets: 11'-0" at both ends.
 - Deck width: 14'-0" (from centerline to edge).
 - Overlays: 2'-6" at both ends.
- Structural Elements:**
 - Brg. Abut #1 (Fix)
 - Brg. Pier #1 (Fix)
 - Brg. Pier #2 (Fix)
 - Brg. Abut #2 (Exp)
- Construction Details:**
 - 6" Ø drain to remain (Typ)
 - Existing Armored Joint (at left end)
 - Existing Armored Joint (at right end)
 - Construction joint (between spans)
- Section Lines:** A-A at both ends.
- North Arrow:** Indicated pointing towards the top-left.

Location of new dowels.
Drill 1" Grout longer of reinf. bar into a $\frac{1}{8}$ " hole 1'3" deep. Tie free end onto exist. dowel

Location of existing dowels

6"

6"

6"

1'-0"

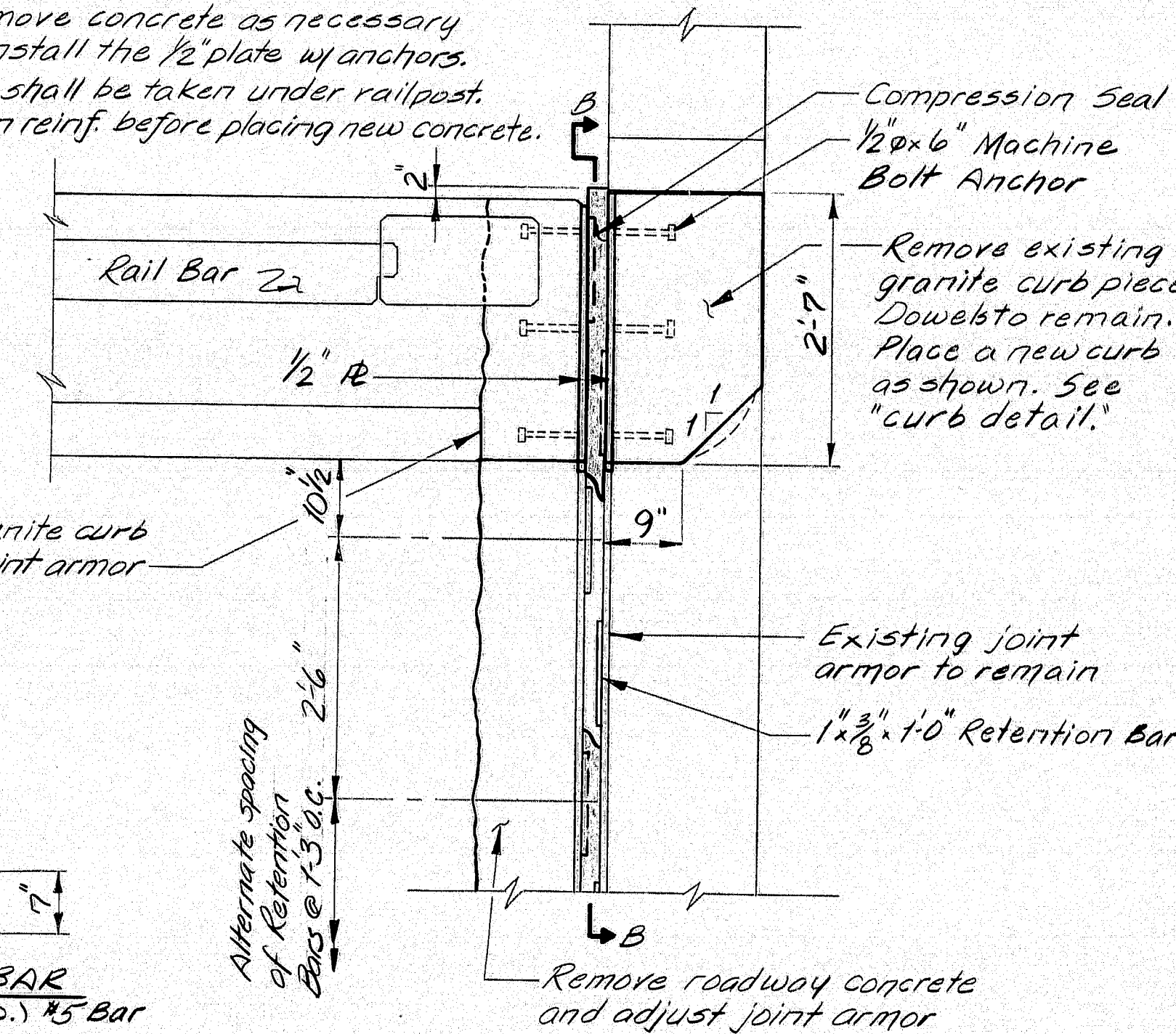
1'-10"

1'-7"

7"

REINF. BAR
(B REQ'D.) #5 Bars

NOTE:
Remove concrete as necessary
to install the $\frac{1}{2}$ " plate w/ anchors.
Care shall be taken under railpost.
Clean reinf. before placing new concrete.



TYPICAL JOINT DETAIL @ CURB

BONDING GROUT NOTE

The deck surface must be thoroughly sandblasted and cleaned to remove all dust or loose materials immediately before bonding grout is placed.

Deck surface to be surface dry with no standing water in pockets or low areas when bonding grout is applied.

The bonding grout shall consist of equal parts by weight of Portland Cement and concrete sand with the plus #8 material removed and mixed with enough water to give a thick, creamy consistency.

Bonding grout to be evenly broomed onto the concrete surface ensuring that the entire surface, including face of curb to the finish grade of the wearing surface, is coated and that no excess grout collects in low spots or pockets. Grout shall be thoroughly broomed under and around reinforcing bars.

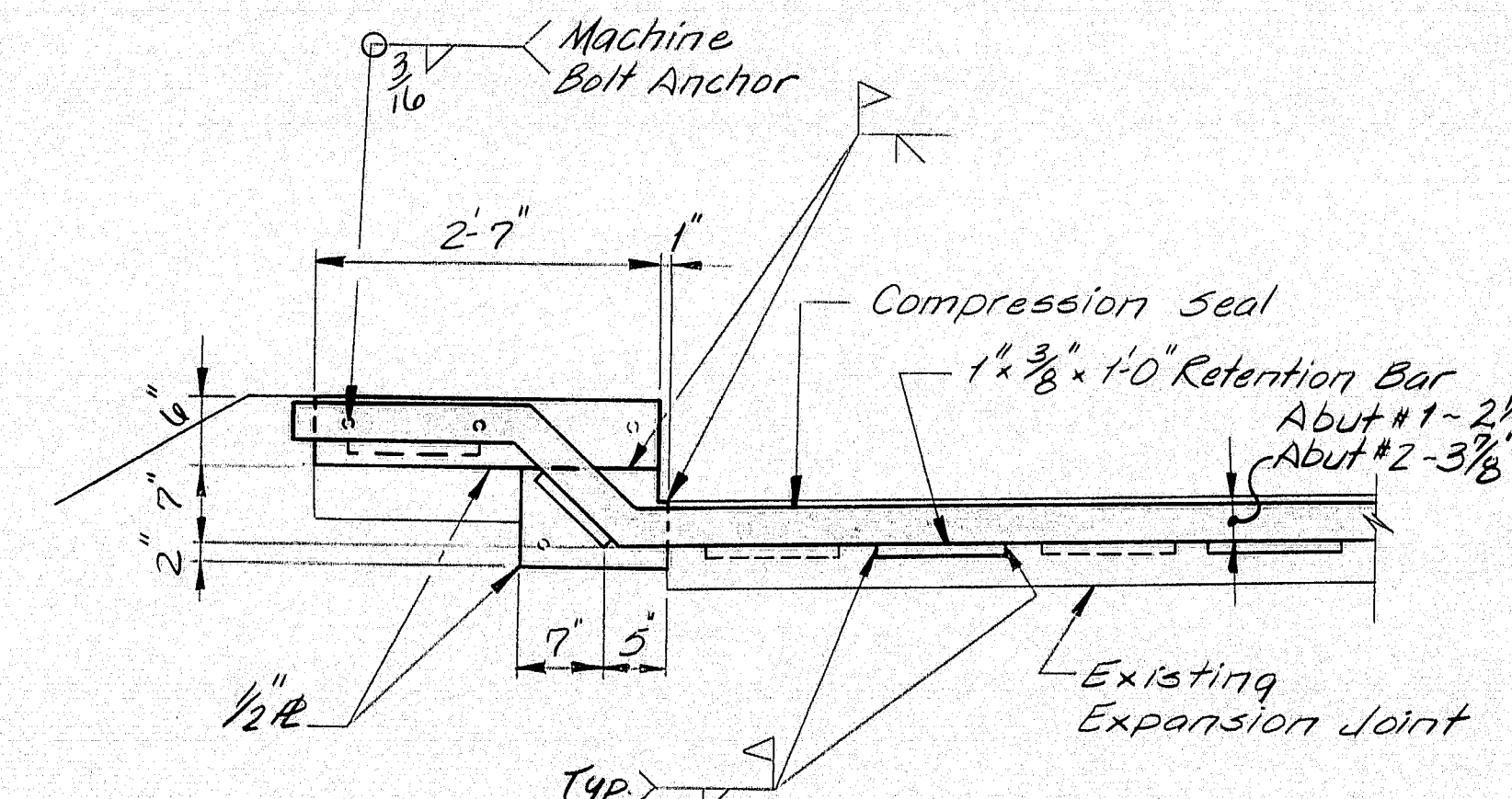
Rate of application must be controlled so that the grout does not dry before the new concrete is placed.

GENERAL NOTES

1. Remove existing wearing surface.
2. If main reinforcing steel is exposed, concrete should be removed under the steel to a depth of 1" minimum.
3. Blast clean the slab before any placement of bonding grout or concrete. Note: SLAB IS TO BE SURFACE DRY BEFORE PLACEMENT OF BONDING GROUT.
4. Broom on a layer of bonding grout just prior to placing concrete. See bonding grout notes this sheet.
5. Concrete to be cured using burlap and water.
6. Concrete to be Class AA and aggregate to be crushed ledge.
7. Minimum cover to be 2" unless otherwise noted.
8. Chamfer all exposed edges of concrete 1/2" unless otherwise noted.
9. Any exposed concrete shall be thoroughly cleaned before placing new concrete.

SCOPE OF WORK

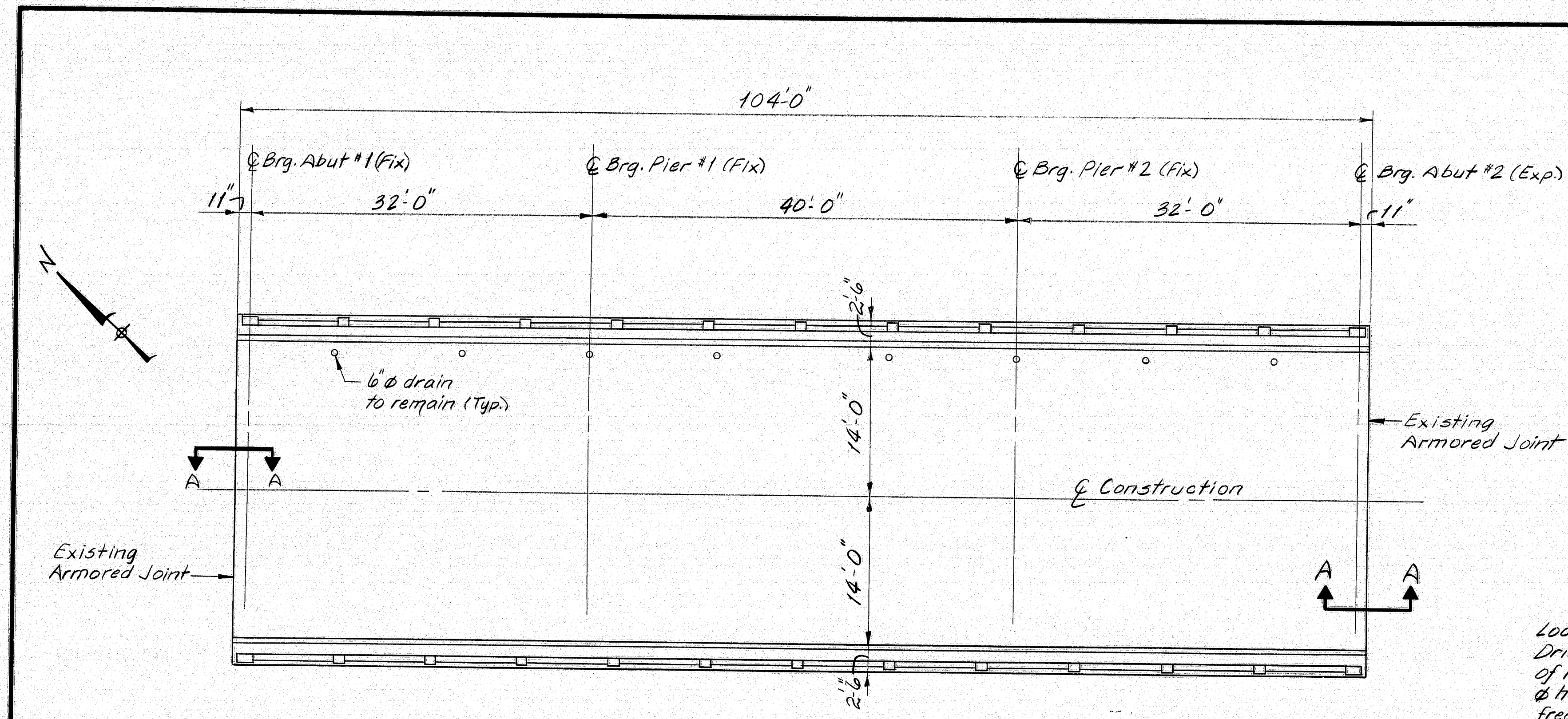
Remove existing concrete wearing surface and install a 3" bonded concrete wearing surface. Install a compression seal as shown at both ends of the bridge.



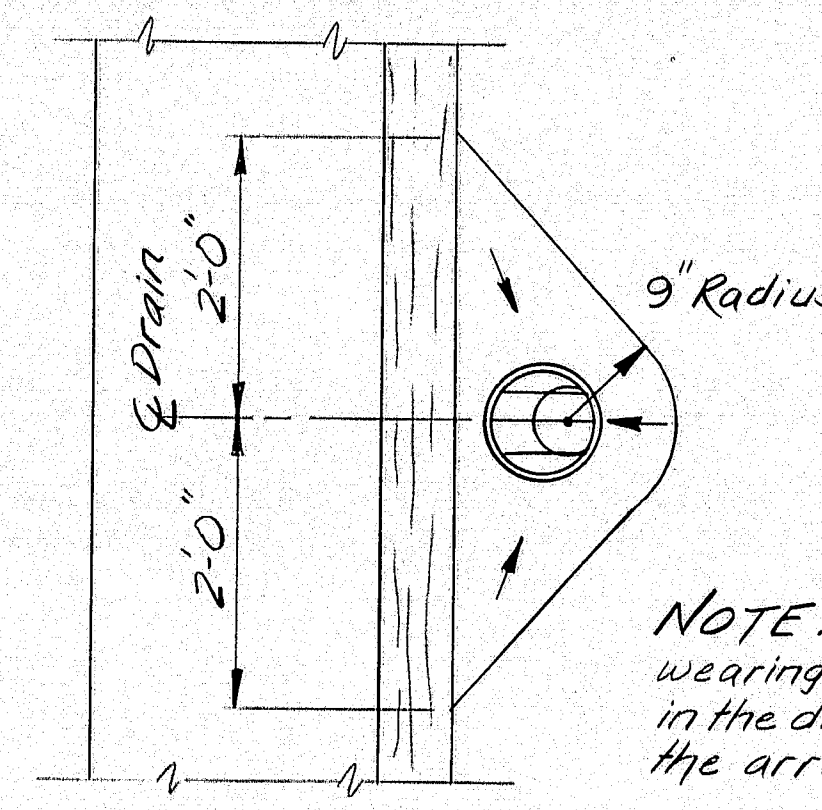
ELEVATION B-B

111-54

<p>MATERIALS LIST</p> <p>8- 1'-0" x 1/2" x 9" Steel Plates</p> <p>8- 2'-7" x 1/2" x 6" Steel Plates</p> <p>32- 1/2" x 6" Machine Bolts</p> <p>52- 1" x 3/8" x 1'-0" Retention Bar</p> <p>1- Compression Seal for Abut. #1 x 35'-0"</p> <p>1- Compression Seal for Abut #2 x 35'-0"</p>	<p>STATE OF MAINE DEPARTMENT OF TRANSPORTATION</p> <p>PARLIN STREAM BRIDGE No. 2</p> <p>IN</p> <p>LONG POND SOMERSET COUNTY</p> <p><u>GENERAL PLAN</u></p>
<p>SHEET 1 OF 1 AUGUSTA, MAINE MAY 1990</p>	

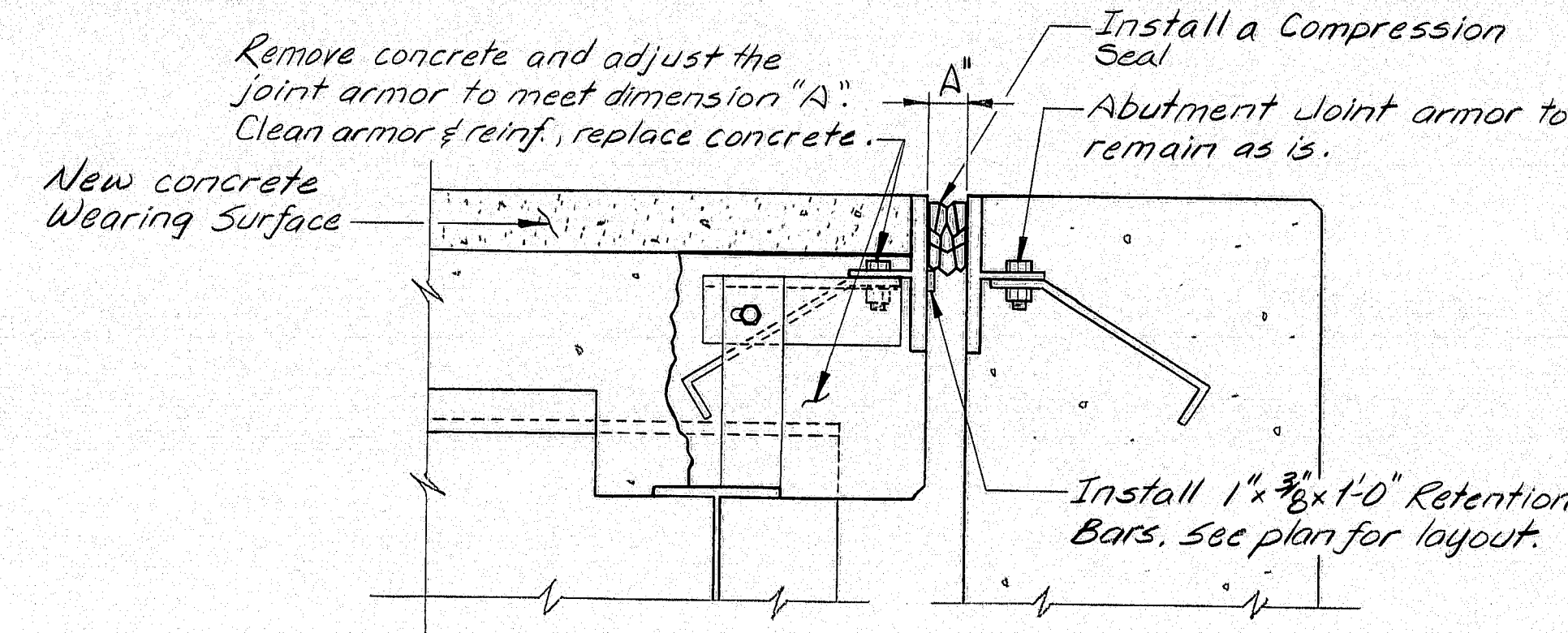


PLAN

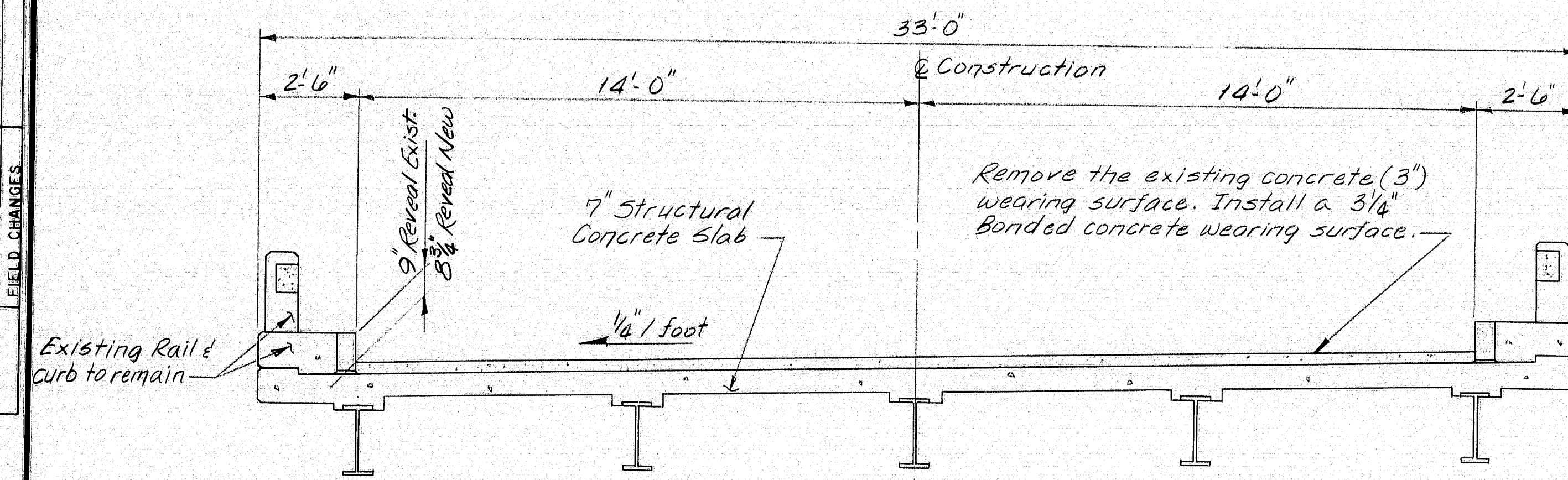


DRAIN DETAIL

NOTE: Depress wearing surface $\frac{1}{2}$ " in the direction of the arrows.



SECTION A-A



TRANSVERSE SECTION

PLANS	DESIGN - DETAILED	BY _____ DATE _____
	CHECKED	
	REVISIONS	
	FIELD CHANGES	

BRUNING 45710-1